

XGA22ACK


**SOLID
TO SUCCEED**

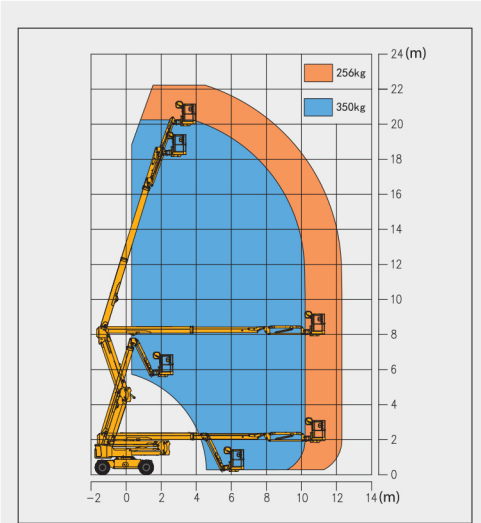
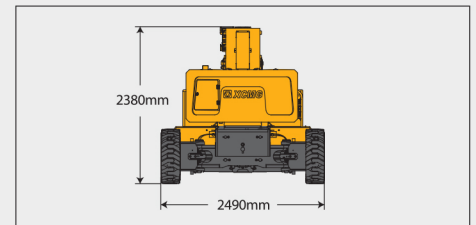
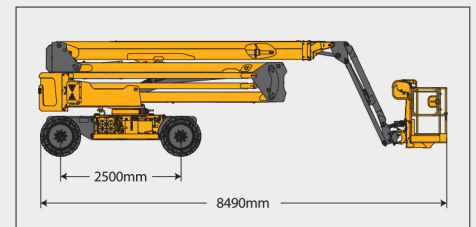
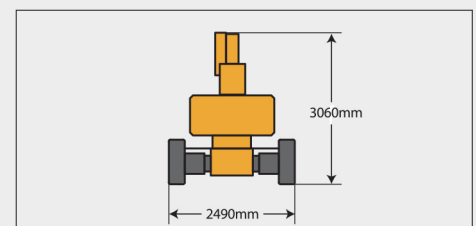
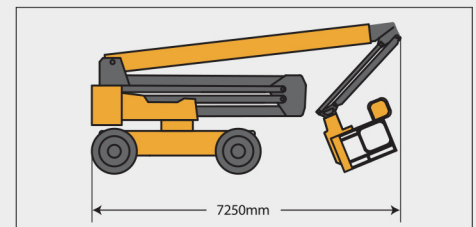
Articulated Boom Lift-Electric

Item	Metric	
Dimension		
Overall dimension - stowed state	Length	8490mm
	Width	2490mm
	Height	2380mm
Overall dimension - transportation	Length	7250mm
	Width	2490mm
	Height	3060mm
Platform dimension	Length	1830mm
	Width	760mm
	Height	1150mm
Wheelbase		2500mm
Fly jib length		1850mm
Min. ground clearance		300mm

Performance	
Max. working height	22.21m
Max. platform height	20.21m
Max. working range	12.23m
Max. up and over clearance	9.5m
Max. lift capacity	256kg(unlimited)/350kg(limited)
Max. number of occupants	3
Max. working slope	X-5°/ Y-5°
1st boom luffing range	0°~70°
2nd boom luffing range	0°~71°
Fly jib luffing range	-65°~70°
Turntable rotation	360°
Platform rotation	160°
Total weight	10100kg
Driving speed (stowed)	4.5km/h
Driving speed (raised or extended)	0.6km/h
Min. turning radius (inside/outside)	3500mm/5000mm
Turntable tailswing (stowed)	660mm
Max. gradeability	40% (22°)

Power source	Maintenance-free lead acid	Lithium
Control	12V DC proportional control	
Traveling motor	3.3kW/32V	
Emergency power supply	12V/110AH	
Main power source - battery	48V/400Ah	51.5V/456Ah
Main power source - charger	48V/35A	48V/60A
Hydraulic tank capacity	82L	

Tire	
Tire size	836mm×319mm
Tire ground pressure	7.83kg/cm ²
Driving wheels	4
Braking wheels	4
Steering wheels	2


Stowed

Trans


ARTICULATED BOOM LIFT XGA22ACK

Comply with CE

Standard configuration

- 2-entry platform with full open doors
- 4-wheel drive (standard)
- Axle oscillation
- Lowering and moving alarm
- Tilt alarm
- Horn with adjustable volume
- Overload alarm
- Motor overload protection
- Emergency stop of platform and chassis
- Emergency power unit
- 4-wheel braking system
- Self-leveling platform
- Proportional joystick control
- Drive enable
- Full time positive traction drive
- Telematics pre-interface
- Active defense protection system
- Boom self-weight lowering system
- Double-load amplitude control
- Anti-extrusion protection device



Working height
22.21 meters



Lift capacity
256/350Kg



Electric power



Optional configuration

- Platform power supply
- Air pipe to platform
- Tool tray
- Working light assembly
- Fall arrest assembly
- Platform anti-squeeze auxiliary track
- Platform with half-height mesh panel
- Lithium Battery 51.5V/456Ah
- Bonded non-marking solid tires 835mm×295mm
- Perfusion-type solid tires 836mm×319mm
- Press-fit solid tires 835mm×290mm





MG *PLANT & MACHINERY
EXPORTS & SALES LTD*

CALL SALES

094 9251209

087 2466111

087 6685466