

XGA26K

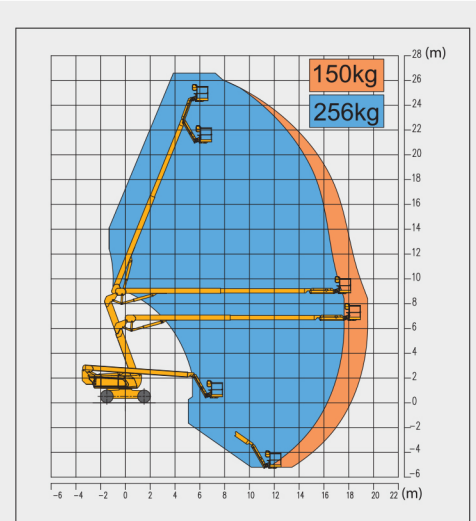
Articulated Boom Lift-Engine Powered

Item	Metric	
Dimension		
Overall dimension - stowed state	Length	11760mm
	Width	2490mm
	Height	2950mm
Overall dimension - transportation	Length	11200mm
	Width	2490mm
	Height	3000mm
Platform dimension	Length	2400mm
	Width	900mm
	Height	1150mm
Wheelbase		3000mm
Fly jib length		1850mm
Min. ground clearance		380mm

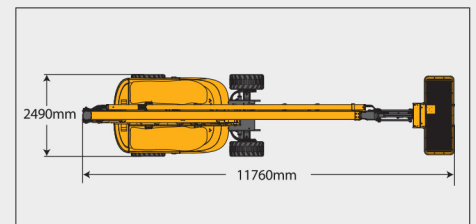
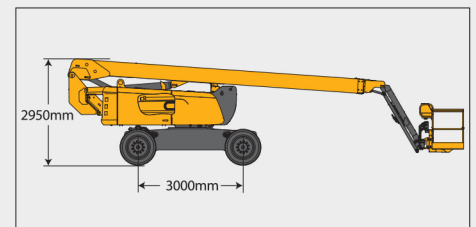
Performance	
Max. working height	26.6m
Max. platform height	24.6m
Max. working range	19.5m
Max. up and over clearance	9m
Max. lift capacity	150kg(unlimited)/256kg(limited)
Max. number of occupants	2
Max. working slope	X-4°/ Y-4°
1st boom luffing range	-1°~ +70°
2nd boom luffing range	-35°~ +68°
Fly jib luffing range	-65°~ +70°
Turntable rotation	360°
Platform rotation	160°
Total weight	16500kg
Driving speed (stowed)	5km/h
Driving speed (raised or extended)	0.6km/h
Min. turning radius (inside/outside)	2400mm/4400mm
Turntable tailswing (stowed)	1330mm
Max. gradeability	45% (24°)

Power source	
Control	12V DC proportional control
Emergency power supply	12V/200Ah
Engine model	Kubota V2607
Engine power/rpm	47.3kW(2400r/min)
Max. engine torque	221.7N·m(1500r/min)
Engine emission standard	EU V
Hydraulic tank capacity	150L
Fuel tank capacity	180L

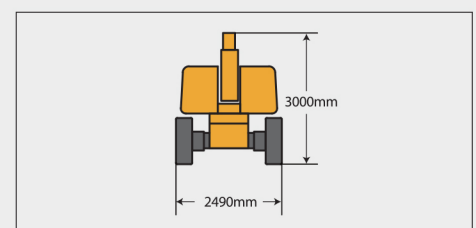
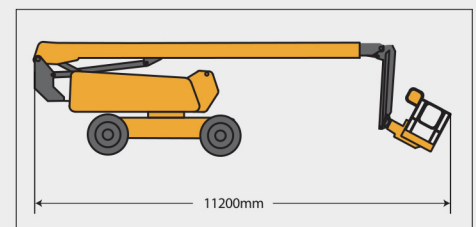
Tire	
Tire size	1024mm×450mm
Tire ground pressure	8.58kg/cm ²
Driving wheels	4
Braking wheels	4
Steering wheels	4



Stowed



Trans





SOLID
TO SUCCEED



ARTICULATED BOOM LIFT XGA26K

Comply with CE

Standard configuration

- 3-entry platform with side revolving door
- Cold start components
- Engine air pre-filter kit
- Engine condition monitoring and start protection device
- Axle oscillation
- Lowering and moving alarm
- Tilt alarm
- Horn with adjustable volume
- Emergency stop of platform and chassis
- Emergency power unit
- Axle oscillation pressure detection system
- 4-wheel braking system
- Self-leveling platform
- Proportional joystick control
- Drive enable
- Hourmeter
- Lockable engine house
- Full time positive traction drive
- Full speed traveling motor
- Telematics pre-interface
- Anti-extrusion protection device
- Thumb rocker steering



Working height
26.6 meters



Lift capacity
150/256Kg



Diesel
power



Optional configuration

- Platform power supply
- Air pipe to platform
- Tool tray
- Working light assembly
- Fall arrest assembly
- Platform anti-squeeze auxiliary track
- Platform with half-height mesh panel
- Hydraulic generator



MG PLANT & MACHINERY
EXPORTS & SALES LTD

TEL: 094 92 51209



MG *PLANT & MACHINERY
EXPORTS & SALES LTD*

CALL SALES

094 9251209

087 2466111

087 6685466