

XGS20ACK


SOLID
 TO SUCCEED

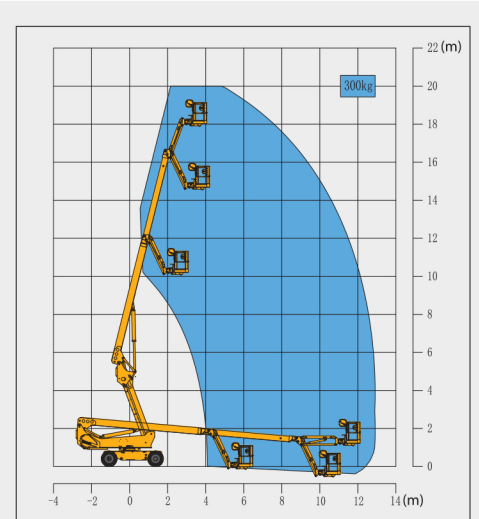
Telescopic Boom Lift-Electric

Item	Metric	
Dimension		
Overall dimension - stowed state	Length	9800mm
	Width	2490mm
	Height	2640mm
Overall dimension - transportation	Length	7400mm
	Width	2270mm
	Height	3000mm
Platform dimension	Length	1830mm
	Width	760mm
	Height	1150mm
Wheelbase	2500mm	
Fly jib length	1850mm	
Min. ground clearance	300mm	

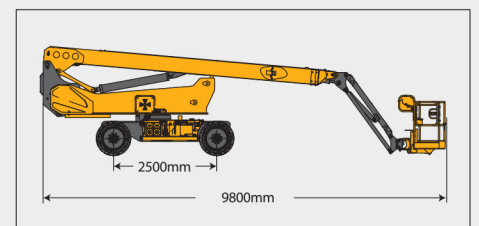
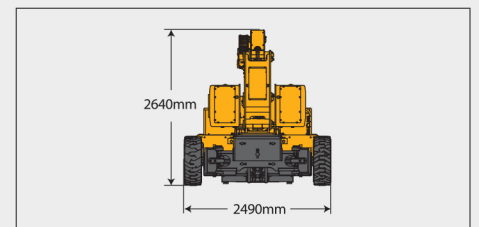
Performance	
Max. working height	20.5m
Max. platform height	18.5m
Max. working range	13.2m
Max. lift capacity	300kg (unlimited)
Max. number of occupants	3
Max. working slope	X-5°/Y-5°
Telescopic boom luffing range	-5° ~ +76°
Fly jib luffing range	-65° ~ +70°
Turntable rotation	360°
Platform rotation	160°
Total weight	8600kg
Driving speed (stowed)	4.8km/h
Driving speed (raised or extended)	0.6km/h
Min. turning radius (inside/outside)	2500mm/5000mm
Turntable tailswing (stowed)	1630mm
Max. gradeability	45% (24°)

Power source	Maintenance-free lead acid	Lithium
Control	12V DC proportional control	
Traveling motor	3.3kW/32V	
Emergency power supply	12V/110Ah	
Main power source - battery	48V/400Ah	51.2V/412Ah
Main power source - charger	48V/35A	48V/60A
Hydraulic tank capacity	103L	

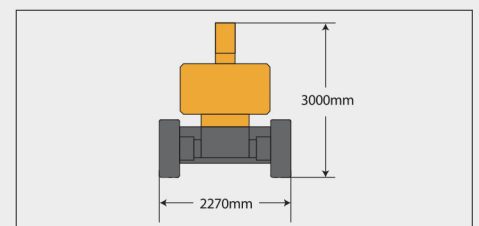
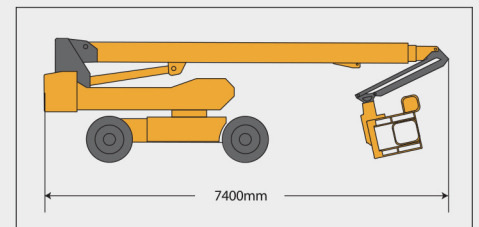
Tire	
Tire size	835mm×295mm
Tire ground pressure	10.19kg/cm ²
Driving wheels	4
Braking wheels	4
Steering wheels	2



Stowed



Trans





SOLID
TO SUCCEED



TELESCOPIC BOOM LIFT XGS20ACK

Comply with CE

Standard configuration

- 2-entry platform with full open doors
- Axle oscillation
- Lowering and moving alarm
- Tilt alarm
- Horn with adjustable volume
- Overload alarm
- Motor overload protection
- Emergency stop of platform and chassis
- Emergency power unit
- 4-wheel braking system
- Self-leveling platform
- Proportional joystick control
- Drive enable
- Hourmeter
- 360° continuous turntable rotation
- Full time positive traction drive
- Telematics pre-interface
- Anti-extrusion protection device
- Boom self-weight lowering system



Working height
20.5 meters



Lift capacity
300Kg



Electric
power



Optional configuration

- Platform power supply
- Air pipe to platform
- Tool tray
- Working light assembly
- Fall arrest assembly
- Platform anti-squeeze auxiliary track
- Platform with half-height mesh panel
- Lithium battery 51.2V/412Ah



MG PLANT & MACHINERY
EXPORTS & SALES LTD

TEL: 094 92 51209



MG *PLANT & MACHINERY
EXPORTS & SALES LTD*

CALL SALES

094 9251209

087 2466111

087 6685466