

XGS28E

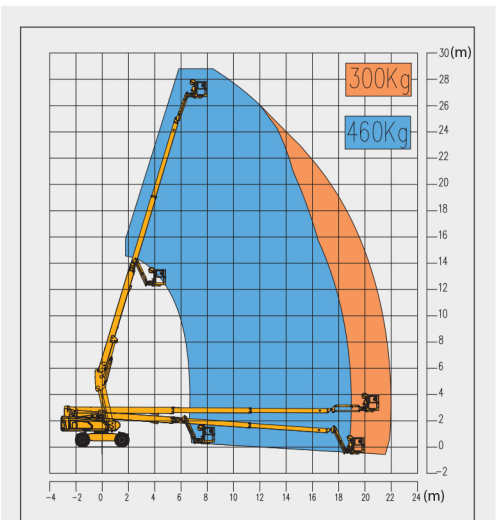
Telescopic Boom Lift-Engine Powered

| Item | Metric | |
|------------------------------------|--------|---------|
| Dimension | | |
| Overall dimension - stowed state | Length | 12300mm |
| | Width | 2490mm |
| | Height | 3050mm |
| Overall dimension - transportation | Length | 10200mm |
| | Width | 2490mm |
| | Height | 3050mm |
| Platform dimension | Length | 2400mm |
| | Width | 900mm |
| | Height | 1150mm |
| Wheelbase | | 3000mm |
| Fly jib length | | 1850mm |
| Min. ground clearance | | 310mm |

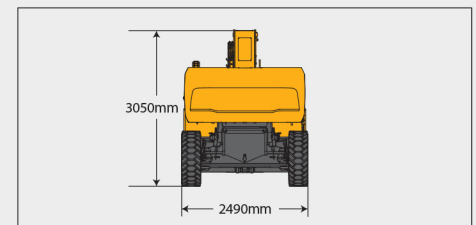
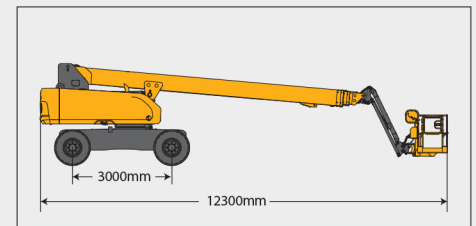
| Performance | |
|--------------------------------------|----------------------------------|
| Max. working height | 28.2m |
| Max. platform height | 26.2m |
| Max. working range | 22m |
| Max. lift capacity | 300kg (unlimited)/460kg(limited) |
| Max. number of occupants | 3 |
| Max. working slope | X-3°/ Y-3° |
| Telescopic boom luffing range | -5°~ +75° |
| Fly jib luffing range | -64°~ +70° |
| Turntable rotation | 360° |
| Platform rotation | 160° |
| Total weight | 18300kg |
| Driving speed (stowed) | 6.1km/h |
| Driving speed (raised or extended) | 1.1km/h |
| Min. turning radius (inside/outside) | 3600mm/6700mm |
| Turntable tailswing (stowed) | 1600mm |
| Max. gradeability | 40% (22°) |

| Power source | |
|--------------------------|-----------------------------|
| Control | 12V DC proportional control |
| Emergency power supply | 12V/200Ah |
| Engine model | Kubota V2607 |
| Engine-power/rpm | 47.3kW/(2400r/min) |
| Max. engine torque | 221.7N·m |
| Engine emission standard | EU V |
| Hydraulic tank capacity | 210L |
| Fuel tank capacity | 180L |

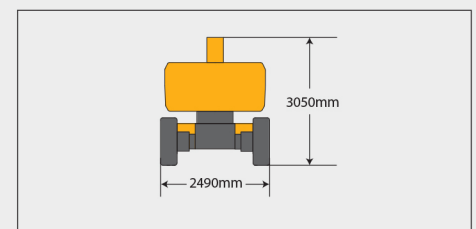
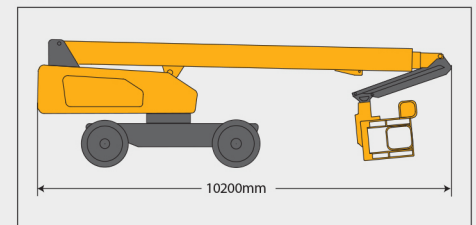
| Tire | |
|----------------------|------------------------|
| Tire size | 1082mm×376mm |
| Tire ground pressure | 8.58kg/cm ² |
| Driving wheels | 4 |
| Braking wheels | 4 |
| Steering wheels | 2 |



Stowed



Trans





SOLID
TO SUCCEED



TELESCOPIC BOOM LIFT XGS28E

Comply with CE

Standard configuration

- 3-entry platform with side revolving door
- Cold start components
- Engine air pre-filter kit
- Engine condition monitoring and start protection device
- Axle oscillation
- Lowering and moving alarm
- Tilt alarm
- Emergency stop of platform and chassis
- Emergency power unit
- Axle oscillation pressure detection system
- 4-wheel braking system
- Self-leveling platform
- Proportional joystick control
- Drive enable
- Full time positive traction drive
- Full speed traveling motor
- Telematics pre-interface
- Anti-extrusion protection device
- Thumb rocker steering



Working height
28.2 meters



Lift capacity
300/460Kg



Diesel
power



Optional configuration

- Gray perfusion-type solid tires 1082mm×376mm
- Hydraulic generator
- Platform power supply
- Air pipe to platform
- Tool tray
- Working light assembly
- Fall arrest assembly
- Platform anti-squeeze auxiliary track
- Platform with half-height mesh panel
- Aircraft protection device



MG PLANT & MACHINERY
EXPORTS & SALES LTD

TEL: 094 92 51209



MG *PLANT & MACHINERY
EXPORTS & SALES LTD*

CALL SALES

094 9251209

087 2466111

087 6685466