

XGS32K


**SOLID
TO SUCCEED**

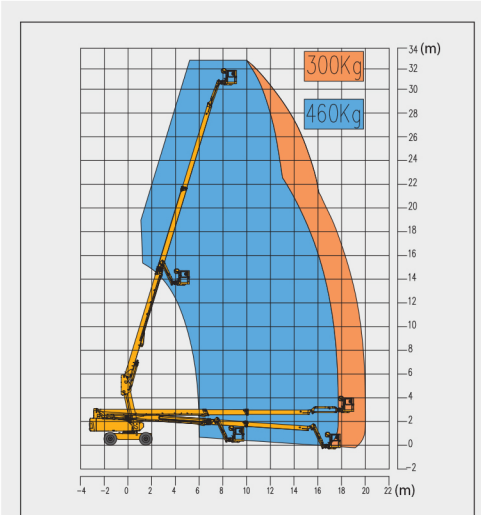
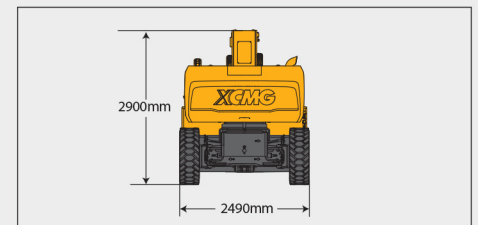
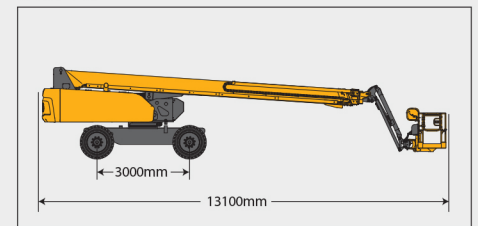
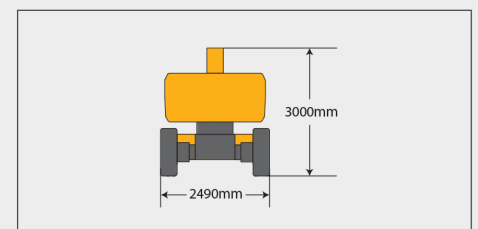
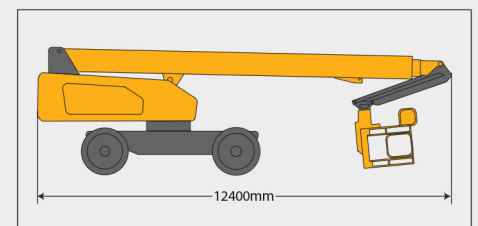
Telescopic Boom Lift-Engine Powered

Item	Metric	
Dimension		
Overall dimension - stowed state	Length	13100mm
	Width	2490mm
	Height	2900mm
Overall dimension - transportation	Length	12400mm
	Width	2490mm
	Height	3000mm
Platform dimension	Length	2400mm
	Width	900mm
	Height	1150mm
Wheelbase		3000mm
Fly jib length		1850mm
Min. ground clearance		400mm

Performance	
Max. working height	32.6m
Max. platform height	30.6m
Max. working range	20m
Max. lift capacity	300kg (unlimited)/460kg(limited)
Max. number of occupants	3
Max. working slope	X-5°/ Y-5°
Telescopic boom luffing range	-4°~ +73°
Fly jib luffing range	-65°~ +70°
Turntable rotation	360°
Platform rotation	160°
Total weight	18500kg
Driving speed (stowed)	5.5km/h
Driving speed (raised or extended)	0.6km/h
Min. turning radius (inside/outside)	4400mm/6250mm
Turntable tailswing (stowed)	2030mm
Max. gradeability	45% (24°)

Power source	
Control	12V DC proportional control
Emergency power supply	12V/200Ah
Engine model	Kubota V2607
Engine-power/rpm	47.3kW/(2400r/min)
Max. engine torque	221.7 N·m
Engine emission standard	EU V
Hydraulic tank capacity	170L
Fuel tank capacity	180L

Tire	
Tire size	995mm×380mm
Tire ground pressure	8.92kg/cm ²
Driving wheels	4
Braking wheels	4
Steering wheels	2


Stowed

Trans




SOLID
TO SUCCEED



TELESCOPIC BOOM LIFT XGS32K

Comply with CE

Standard configuration

- 3-entry platform with side revolving door
- Cold start components
- Engine air pre-filter kit
- Engine condition monitoring and start protection device
- Axle oscillation
- Lowering and moving alarm
- Tilt alarm
- Horn with adjustable volume
- Emergency stop of platform and chassis
- Emergency power unit
- Axle oscillation pressure detection system
- 4-wheel braking system
- Self-leveling platform
- Proportional joystick control
- Drive enable
- Lockable engine house
- Full time positive traction drive
- Full speed traveling motor
- Telematics pre-interface
- Anti-extrusion protection device
- Hydraulic oil cooler
- Harsh environment kits
- Thumb rocker steering



Working height
32.6 meters



Lift capacity
300/460Kg



Diesel
power



Optional configuration

- Gray perfusion-type tires 995mm×380mm
- Optional DEUTZ Euro 5 engine
- Platform power supply
- Air pipe to platform
- Tool tray
- Working light assembly
- Fall arrest assembly
- Platform anti-squeeze auxiliary track
- Platform with half-height mesh panel



MG PLANT & MACHINERY
EXPORTS & SALES LTD

TEL: 094 92 51209



MG *PLANT & MACHINERY
EXPORTS & SALES LTD*

CALL SALES

094 9251209

087 2466111

087 6685466